

PLEASE CHECK WWW.MOLEX.COM FOR LATEST PART INFORMATION

Part Number: [0850425213](#)
Status: **Active**
Overview: [din_41612](#)
Description: 2.54mm (.100") Pitch DIN 41612 Receptacle, Style C, 96 Circuits

Documents:

[3D Model](#) [RoHS Certificate of Compliance \(PDF\)](#)
[Drawing \(PDF\)](#)

Agency Certification

CSA LR19980
 UL E29179

General

Product Family Backplane Connectors
 Series [85042](#)
 Application Daughtercard
 Component Type PCB Receptacle
 Overview [din_41612](#)
 Product Name IEC 603-2/DIN 41612
 Style C

Physical

Circuits (Loaded) 96
 Circuits (maximum) 96
 Circuits Detail Rows A, B, & C
 Durability (mating cycles max) 500
 First Mate / Last Break No
 Flammability 94V-0
 Guide to Mating Part No
 Keying to Mating Part Yes
 Number of Columns 32
 Number of Pairs Open Pin Field
 Number of Rows 3
 Orientation Vertical
 PC Tail Length (in) 0.114 In
 PC Tail Length (mm) 2.90 mm
 PCB Locator No
 PCB Retention Yes
 Packaging Type Tray
 Pitch - Mating Interface (in) 0.100 In
 Pitch - Mating Interface (mm) 2.54 mm
 Pitch - Term. Interface (in) 0.100 In
 Pitch - Term. Interface (mm) 2.54 mm
 Polarized to PCB Yes
 Stackable No
 Surface Mount Compatible (SMC) No
 Temperature Range - Operating -55°C to +125°C

Electrical

Current - Maximum per Contact 1A
 Data Rate 622.0 Mbps
 Real Signals (per 25mm) 29
 Shielded No
 Voltage - Maximum 250V AC (RMS)

Material Info

EU RoHS

**ELV and RoHS
 Compliant**
**REACH SVHC
 Not Reviewed**
**Halogen-Free
 Status
 Not Reviewed**

China RoHS



**Need more information on product
 environmental compliance?**

Email productcompliance@molex.com
 For a multiple part number RoHS Certificate of
 Compliance, [click here](#)

Please visit the [Contact Us](#) section for any
 non-product compliance questions.

Search Parts in this Series

[85042Series](#)

Mates With

DIN 41612 Headers [85003](#) , [85013](#)

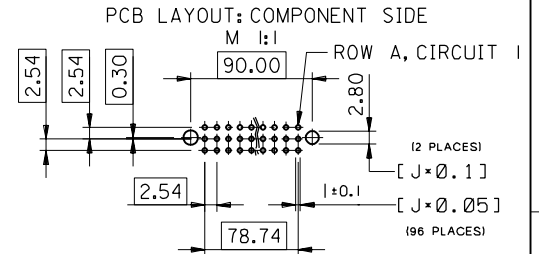
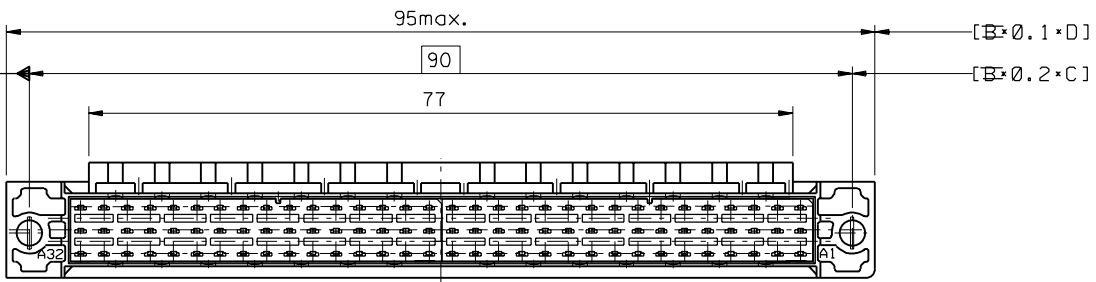
Reference - Drawing Numbers

Sales Drawing

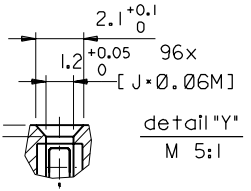
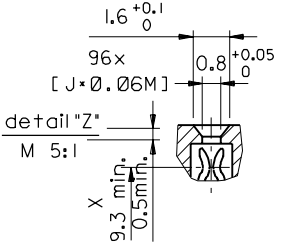
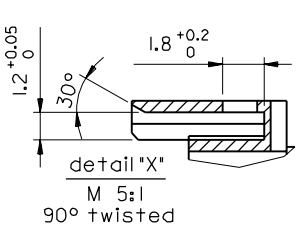
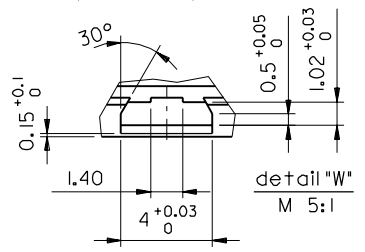
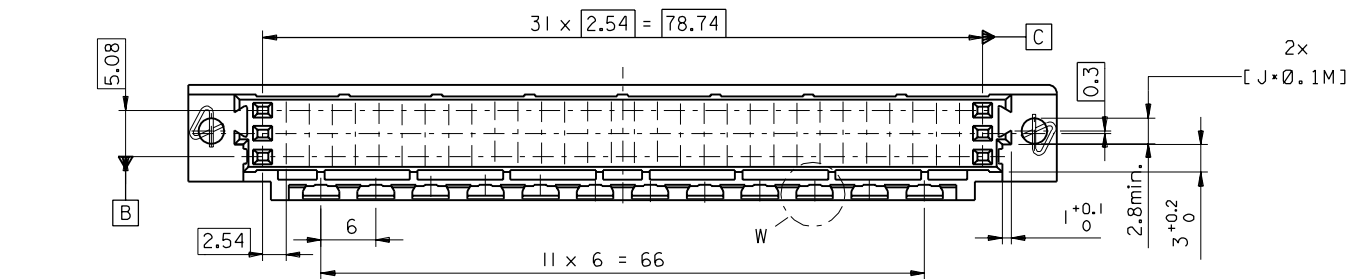
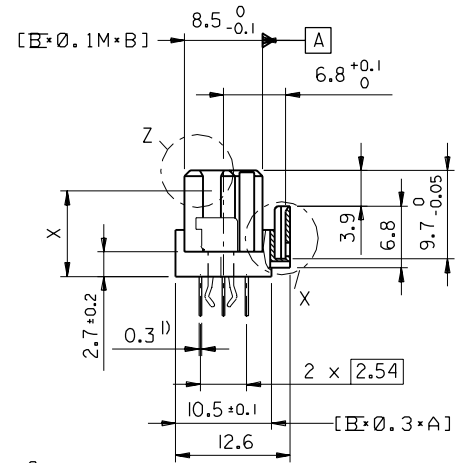
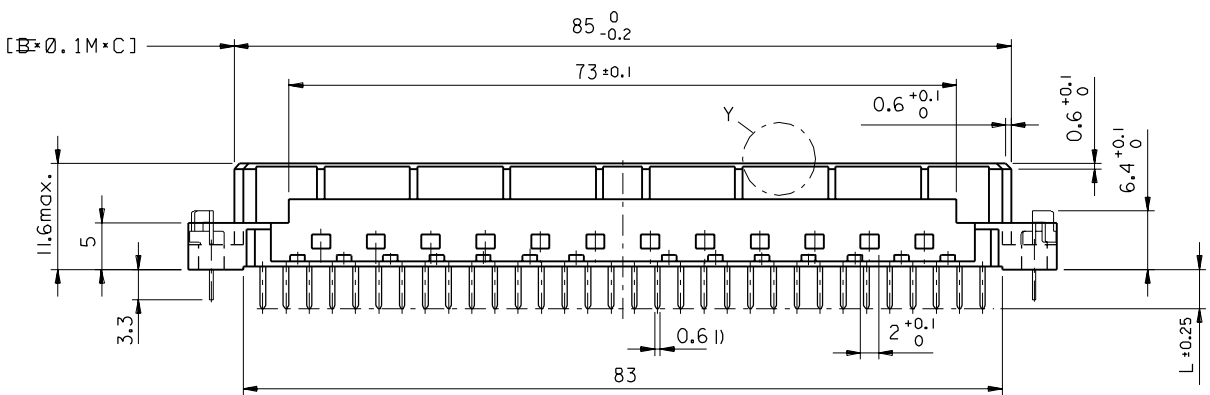
SDA-85042-0001, SDA-85042-5213

This document was generated on 05/17/2010

PLEASE CHECK WWW.MOLEX.COM FOR LATEST PART INFORMATION



l) tails to fit in PC-board layout



FIRST ANGLE PROJECTION		REVISE ONLY ON CAD SYSTEM		SH.	REV.
UNLESS OTHERWISE SPECIFIED TOLERANCES: ANGULAR ± 2°		DRWG BY	SIGN	CAD/CAM PROJECT NAME	
INCH METRIC		KN		85042000 s12	
3 PLACE ±	±	CHK'D BY	SIGN	THIS DRAWING CONTAINS INFORMATION THAT IS PROPRIETARY TO MOLEX INC. & SHOULD NOT BE USED WITHOUT WRITTEN PERMISSION	
2 PLACE ±	±	Ca		TITLE	
1 PLACE ±	±	APP'D BY	SIGN	96 pos. female connector DIN 41612 style C, + clip with coding, dimensions	
DRAFT WHERE APPLICABLE MUST REMAIN WITHIN DIMENSIONS		JB		MOLEX EUROPE	
DESIGN DIMENSION	<input checked="" type="checkbox"/> MM	SCALE		SHEET NO. DATE	
EQUIVALENT DIMENSION	<input type="checkbox"/> MM	2:1		2 of 2 96/04/30	
IF TWO DIMENSIONS ARE SHOWN THE UPPER IS THE DESIGN DIMENSION, LOWER IS SECONDARY				PART NO.	
				SDA-85042-0001	
				DWG NO.	
				SIZE	
				B	

ECN MG1998-2583	Schraege, Lochbild	97-09-17 KN
REVISIONS		
FOR PREVIOUS REVISIONS SEE MRI LIST		
LTR		

VIEW ON MATING SIDE

∩	A	A	A	A	A	A	A	A	A	A	A	A	A	A	A	A	A	A	A	A	A	A	A	A	A	A	A	A	A	
∩	A	A	A	A	A	A	A	A	A	A	A	A	A	A	A	A	A	A	A	A	A	A	A	A	A	A	A	A	A	A
∩	A	A	A	A	A	A	A	A	A	A	A	A	A	A	A	A	A	A	A	A	A	A	A	A	A	A	A	A	A	A

1 2 3 4 5 6 7 8 9 10 11 12 13 14 15 16 17 18 19 20 21 22 23 24 25 26 27 28 29 30 31 32 33 34 35 36 37 38 39 40 41 42 43 44 45 46 47 48 49 50

A = 96 STANDARD CONTACTS L-2,9

Marking	Standard
Performance level	G1/0 = Contact area level / Termination tin
Flux proof	no
Fixing clip	no
Dimensions	SDA-85042-0001 sht.2
Technical Data	PS-85042-0001

A	G1/0	a1-32	b1-32	c1-32
Contact symbol	Perform. level	Contact position number		

ECN 2415	first release	FOR PREVIOUS REVISIONS SEE MRI LIST	REVISIONS	REVISIONS	SH. REV.
∇	LTR	SCALE	CHK'D BY	DRWG BY	CAD/CAM PROJECT NAME
		DESIGN DIMENSION	APP'D BY	KN	S8504252
		EQUIVALENT DIMENSION	JB	CHK'D BY	S11
		IF TWO DIMENSIONS ARE SHOWN, THE UPPER IS THE DESIGN DIMENSION, LOWER IS SECONDARY		Ca	THIS DRAWING CONTAINS INFORMATION THAT IS PROPRIETARY TO MOLEX INC. & SHOULD NOT BE USED WITHOUT WRITTEN PERMISSION
				CC	TITLE
				CB	96 pos. female connector acc. DIN 41612 style C contacts arrangement
				CB	MOLEX EUROPE
				CB	SHEET NO. DATE
				CB	1 OF 1 97/02/19
				CB	PART NO. DWG NO.
				CB	85042-5213 SDA-85042-5213
				CB	SIZE
				CB	A